

2008
WISCONSIN CANADA GOOSE
HARVEST REPORT
Volume 18, Issue 3



Kent Van Horn
Bureau of Wildlife Management

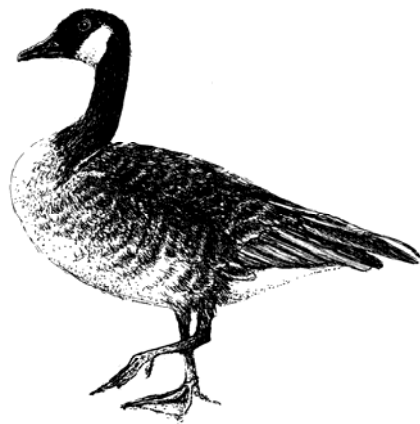
James Christopoulos
Bureau of Wildlife Management

Brian Dhuey
Bureau of Science Services

Season/ Zone	2008 Estimated Canada Goose Harvest
Early	24,276
Collins	392
Horicon	12,543
Exterior	41,215
TOTAL	78,426

Table of Contents

Introduction	2
Changing Canada Goose Harvest Management in the Mississippi Flyway	3
Breeding populations	4
Methods	4
Horicon/Collins mail survey	4
Results and Discussion	5
Early September Canada goose season hunter participation and harvest	5
Regular season hunter participation and characteristics	7
Exterior Zone	7
Horicon Zone	7
Collins Zone	9
Regular season harvest	9
Statewide	9
Exterior Zone	10
Horicon Zone	12
Collins Zone	13
Management implications	13
Citations	15
Harvest and participation data	16
Canada Goose management zone map	34



WISCONSIN 2008 CANADA GOOSE HARVEST REPORT

INTRODUCTION

The management of Canada goose populations and hunting recreation has been a social and biological challenge for the state of Wisconsin since the 1950's (Miller 1998). Continental Canada goose management is based on several different breeding populations. The fall harvest of Canada geese in Wisconsin consists primarily of 2 populations. One population is the Mississippi Valley Population (MVP) that breeds along the southern Hudson Bay Coast in Ontario and migrates south primarily through Wisconsin and Michigan, and then Illinois, Indiana, and western Ohio. Traditionally, many MVP geese wintered in Kentucky and Tennessee, and sometimes as far south as Mississippi (MVP plan 1998, Leafloor et al. 2003). However, in recent years many are wintering as far north as northern Illinois and southern Wisconsin. A second major population of geese contributing to Wisconsin's harvest is the resident or giant race which breeds in WI. Based on banding data, a small percentage of Wisconsin's goose harvest (~3%) also comes from the Eastern Prairie and Tall Grass Prairie Populations. The Mississippi Flyway Council (MFC) was established in 1952 to work cooperatively among the states, provinces, and federal governments in the management of migratory birds and in 1956 the MFC established a Canada Goose Committee to manage the harvest and distribution of several Canada goose populations in the Flyway.

In the 1950's the MVP was the primary population of Canada geese in Wisconsin while the giant race was considered nearly extinct in the Flyway. During this period, the Horicon National Wildlife Refuge (NWR) in WI began managing specifically to support migrating MVP during the fall. Landscape changes, Horicon refuge management and an expanded refuge system in Illinois all contributed to an increase in fall/winter Canada goose populations and harvest levels in both states. In 1960 Wisconsin and Illinois agreed to establish a harvest quota system to cooperatively manage goose harvest and despite a number of changes, a quota system remained through 2006. During the early 1960's MVP geese steadily increased in numbers at Horicon with fall numbers exceeding 100,000 geese and harvest near 1,000 geese per day for only a 9 to 11 day season. This growing fall goose population began to cause significant agricultural crop depredation in WI and complaints by hunters in states to the south that WI was short stopping geese (Miller 1998). In 1965 agricultural damage payments began as a result of goose depredation in east central WI. Over a period of several years in the 1960's social, political, and biological forces surrounded goose management and resulted in actions such as hazing and a harvest of 30,000 geese in 3 days of shooting in 1966. In 1965 the MFC agreed to a winter Flyway population objective of 200,000 and in 1969 this was increased to 300,000. Several states in the Flyway wished to see an increase in the MVP goose population and a greater distribution of these birds to the south of WI while WI managers continued to express concern over increased goose concentrations in east central WI.

In the 1970's up to 80% (250,000-300,000 birds) of the MVP winter population stopped at the Horicon and surrounding areas (Miller 1998). Agricultural and biological concerns over this concentration of birds led to the 1976 management strategy to reduce the peak fall population and encourage birds to move south. Altering land management in the Horicon NWR, and increased harvest and disturbance helped to move geese out of the refuge but not necessarily to

locations outside of WI. However, many hunters and goose watchers in Wisconsin opposed these efforts to redistribute goose concentrations. A number of biological and political concerns complicated management efforts. In 1979 the MFC prepared the first Flyway-wide management plan for the MVP in an attempt to create a more scientifically based management strategy. Revisions of this plan continue to guide the management of the MVP population.

Meanwhile, a few small remnants of the giant race of Canada geese were discovered in southern WI and elsewhere in the Flyway during the 1950's and 1960's. Restoration efforts to increase this population began in the 1960's and involved the releasing of birds from captive reared populations, translocation of birds within and among states and provinces, and closure of Canada goose hunting in some areas (MF Giant Canada goose management plan 1996). Now giant Canada geese are the most abundant subspecies in the Flyway (Leafloor et al. 2003). The increase in the giant population began in urban and rural areas of southeast WI and this area remains an area of increasing resident goose densities. Giant Canada geese have adapted well to the urban, suburban and agricultural landscapes in Wisconsin resulting in an increasing population and expanding distribution across the state. With this increasing population and distribution come both problems with agricultural damage and urban nuisance geese as well as increased hunting and viewing opportunities. Harvest derivations indicate that giants are now about 50% of the WI regular season Canada goose harvest and nearly all of the early September season harvest. The Wisconsin breeding population of giants steadily increased during the 1980's and 1990's but since 2005 survey data suggest the population has stabilized.

The MVP management plan provides the basis for evaluation and management of the MVP population and harvest. The annual harvest quota of the past years has been determined using the breeding population estimate (breeding adults) produced by the Ontario Ministry of Natural Resources as a trigger to determine different harvest levels. Based on the total MVP harvest level, the harvest quota in 2006 was distributed among the major and minor harvest states as follows; WI –35%, IL –33%, MI 20%, KY 12% and the minor harvest states a collective harvest of 80,500 geese. Annual harvest derivations for each state indicated the percentage of the annual Canada goose harvest for each state that comes from MVP, resident giants or other populations. The total harvest quota for the state of Wisconsin was determined by applying more recent derivations to the MVP harvest limit. This was the system that continued to guide the Canada goose season framework for Wisconsin up until 2006.

Changing Canada Goose Harvest Management in the Mississippi Flyway

Historically, there has been an emphasis on maintaining a high abundance of MVP geese via population objectives and harvest restraint. The simultaneous growth of giant Canada goose populations has provided more harvest opportunities, but has also expanded management challenges (e.g., human-goose conflict). There is some evidence that the annual regular hunting season changes intended to reduce harvest on MVP geese in low population years have also reduced harvest on resident giants, allowing greater growth of that population. In addition, at the Mississippi Flyway level over 80% of the total Canada goose harvest consists of resident giant Canada geese. Therefore, it is believed that the resident giant population can “buffer” the MVP and other interior Canada goose populations from harvest impacts in most locations. In order to test this theory, the MVP harvest states in the flyway have set stable seasons for five years,

beginning in 2007. By creating a stable hunting season framework and monitoring outcomes, the ability of giants to “buffer” the harvest of migrants will be tested. On a flyway-wide level, the effects of this new strategy are predicted to increase overall harvest and harvest rate of giant Canada geese and also to slow or stabilize giant Canada goose population growth. Predicted effects on migrant goose populations include either an insignificant increase in harvest rate or an initial larger increase in harvest rate followed by declining abundance and declining harvest rate. When three years of data on the stable seasons are available, evaluation of this new strategy can begin.

Harvest quantity, distribution and hunter participation are all important pieces of information for the evaluation of this harvest strategy and management of Canada geese. This report is a summary of the 2008 management of harvest. This series of reports has been and continues to be instrumental in making decisions for the management of Canada geese in Wisconsin.

BREEDING POPULATIONS

In 2008, the breeding surveys for MVP geese in northern Ontario indicated a poor production year. Late winter conditions and a spring blizzard likely caused the observed decrease in nest initiation (Brook and Hughes, July 2008). The breeding population was estimated at 305,190 breeding adults, which was 17 percent below the 1989-2007 average. In Wisconsin, the 2008 breeding population estimate for giant Canada geese was 116,715 and the trend over the past 5 years seems to indicate the population is leveling off at around 120,000.

METHODS

The Wisconsin Department of Natural Resources collects Canada goose harvest data via 2 different methods in the 3 Canada goose management zones. In the statewide Early September season and in the Exterior zone during the regular season, all Canada goose hunters are required to report their harvest using the 1-800-99-GOOSE telephone call-in system within 48 hours. With this system hunters report the following information: DNR customer number, month of harvest, day of harvest, number of geese harvested, and county of harvest. This information is electronically recorded and summarized in a harvest database that is reviewed at least weekly during the season to track harvest levels. Department law enforcement personnel around the state conduct field checks of Canada goose hunters to assure compliance with the recording system. Results of these field checks provide a compliance rate that is used to adjust the harvest records to estimate total Canada goose harvest.

Horicon/Collins Mail Survey

Canada goose hunters in the Horicon and Collins zones were mailed a hunter questionnaire to obtain harvest information. The questionnaire was sent to 100% of permit holders for the Collins Zone and about 68% of the Horicon Zone permit holders. The questionnaire was mailed to hunters at the end of each time period. The hunters were selected randomly in proportion to the number of hunters in each time period. Response rates for questionnaires (Table 1) for the

Collins Zone went down in 2008 when compared to 2007 (47% and 75%, respectively), although there was an increase in the total number of surveys returned and the total number of hunters in this zone. The 2008 response rates for the Horicon Zone decreased slightly when compared to the 2007 response rate (51.3% and 54.3%, respectively).

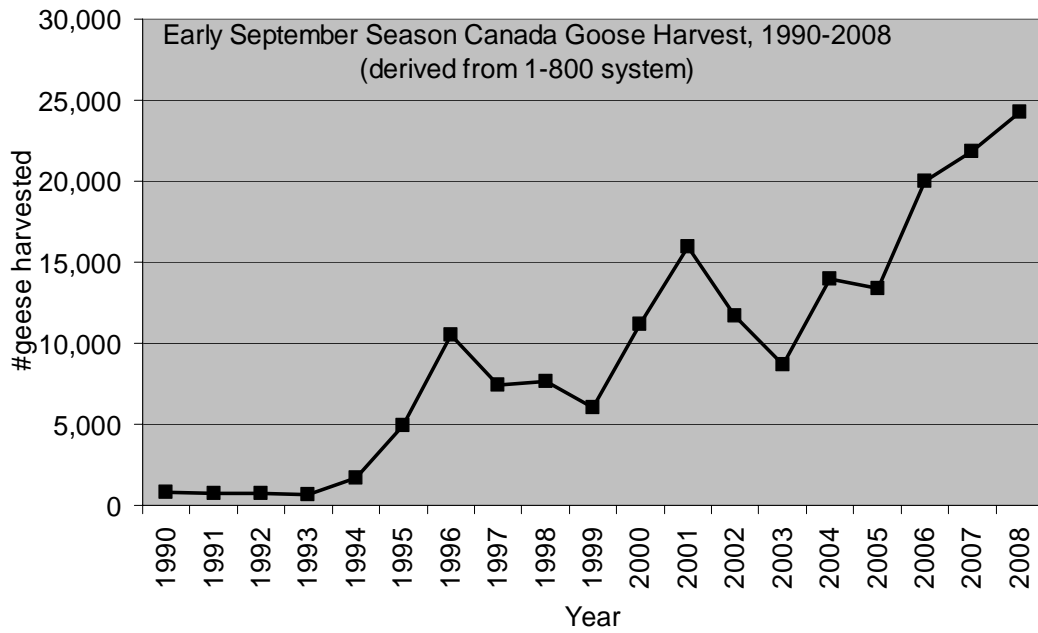
RESULTS AND DISCUSSION

Early September Canada Goose Season Hunter Participation and Harvest

The Early September season is an important part of Wisconsin's Canada goose management program. This season offers hunters an additional recreational experience outside of the regular season and helps to target harvest on our resident giant Canada geese. The breeding population for our resident geese has had a fairly consistent increasing trend, yet recent years' data suggest that the population is leveling off. In some areas these higher goose numbers have resulted in nuisance problems. In 2008 the season was open from September 1-15 which was unchanged from last year. However, in 2008 there were only 4 weekend days versus 5 weekend days in 2007.

The number of applicants for the Early September Canada Goose permit was again down slightly from the last few years (Table 21). This is most likely a result of a decline in Conservation Patron permit holders (due to cost increases of this license twice in the past few years) rather than a reflection of a decrease in the number of hunters with the intent to hunt this early season. We have no data to assess the percent of the total applicants that actively hunt during this period. Conservation Patron license customers are offered an Early September Canada goose permit as part of the combined license package so some of these permit holders may have had little intent to hunt during this season even though they had a permit. The harvest figures for 2008 suggest that hunters who received a permit were more successful this year. This idea is supported by the numbers of hunters who shot one or more geese in the early season in 2008 vs. 2007 (5,001 vs. 4,899).

At an estimated 24,285 geese, the 2008 early Canada goose harvest was the highest harvest on record. All of the counties with the highest early season harvest were among the top 10 in the previous year, except for the addition of Waukesha and loss of Outagamie. This list indicates that the opportunity and need for the early season is distributed across the state. It also suggests that we are successfully targeting different geese and different hunter interest than in the regular season. Counties like Polk, Door and Barron are in the top 10 early season harvest counties but rank lower during the regular season.



Top 10 counties - Early season harvest - 2008

County	Rank	Estimated Kill	Percent of Early Total
Brown	1	1633	6.7%
Manitowoc	2	1304	5.4%
Dodge	3	1161	4.8%
Polk	4	1121	4.6%
Door	5	920	3.8%
Waukesha	6	820	3.4%
Barron	7	774	3.2%
Kewaunee	8	717	3.0%
Sheboygan	8	717	3.0%
Winnebago	9	716	2.9%

Regular Season Hunter Participation and Characteristics

In 2008, 93,863 individuals received a Wisconsin Canada goose regular season hunting permit (Exterior, Horicon, or Collins). This was a decline of 2,009 or -2.1% from 2007. An increase in cost of the Conservation Patron license in recent years may have been the primary cause of this decline which would suggest that this is not a real decline in active Canada goose hunters. As part of the combined license package, a Conservation Patron holder is offered an Exterior Zone Canada goose permit as part of the total license fee so it is easy to obtain. In 2008, the number of Exterior Zone permit holders declined by about 2,765 from 2007. In order to hunt Canada geese in the Horicon and Collins Zones a hunter must apply for a permit and the number of Horicon permit holders increased by 479 and Collins by 277 over 2007 numbers.

Exterior Zone

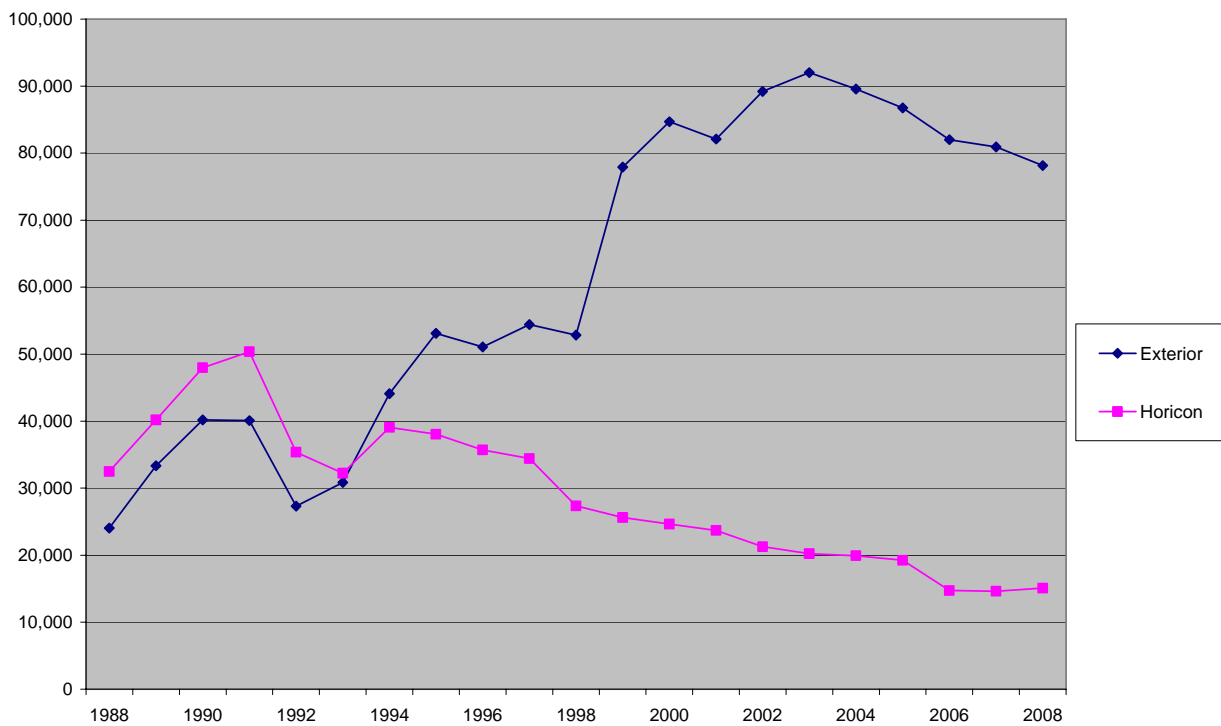
Exterior Zone permits totaled 78,152 in 2008. This represents 83% of the total regular season permits which is similar to recent years. However, we have no estimate of how many were actively hunting geese. Estimates of the number of active Wisconsin goose hunters derived from USFWS HIP estimates for 2008 will not be available until July, 2009. However, previous comparisons of state and federal hunter estimates suggest that about 50% of the Exterior zone permit holders are active goose hunters. This would indicate about 39,000 of the Exterior zone permit holders were actively hunting geese. This does not include those who had purchased a permit earlier in the year with the intent to hunt geese but decided not to hunt when fall arrived.

The 5 counties with the highest total Exterior Zone goose permits were similar when compared to recent years (Table 3), and remained unchanged from 2007. In order, the counties with the highest number of permits issued were Waukesha, Dane, Outagamie, Winnebago, and Brown. Three of these counties also have some of the highest totals for overall human population in the state; however, Outagamie and Winnebago counties seem to have a higher proportion of goose hunters in relation to population size.

Horicon Zone

The Horicon Zone is a large area that includes all of Green Lake and parts of Dodge, Columbia, Fond du Lac, Marquette, Washington, and Winnebago counties. Horicon zone permit holders received 6 tags in 2008; this tag number is part of the stable season trial. A change in the hunting season for 2008 was the reduction of time periods for which permits were offered: from 4 time periods with some overlap to 2 periods with no overlapping days. There has been a gradual decline in the number of Horicon Zone permits over the last 14 years, although permit levels were up slightly last year. The total number of Horicon permits issued in 2008 was 15,091. Also, the percentage of total hunters represented by the Horicon permits increased slightly from 15% in 2007 to 16% in 2008 (Table 2). The percentage of active Horicon zone hunters (those who actually hunted) from all time periods combined decreased from 68% in 2007 to 60% in 2008. In 2008 the mean number of trips (4.5) taken by active hunters in this zone increased from 2007 (4.1- 4.2) for the first time period and decreased from 2007 for the second time period (2007- 3.8-3.9, 2008-3.6, Table 7). A decline in hunter activity during the second period may have been caused by cold temperatures and early snow falls.

Horicon and Exterior Permits Issued



Horicon zone hunters are primarily hunters that have previous experience in this zone. In 2008, 93.2% of the Horicon zone hunters had hunted the Horicon zone in other years (Table 4). This high proportion of repeat hunters is consistent with previous years. The Horicon time periods are intended to distribute hunter harvest pressure across the fall season. Last year, in an effort to simplify regulations, there were only 2 periods, roughly splitting the 92 days season in half, with no overlap as in previous years. In 2007 four time periods were listed on the permits but when the season was implemented periods 1 and 2 were the same and periods 3 and 4 were the same. The combined permit numbers for Horicon time periods 1 and 2 in 2007 was 7,688 while in 2008 the similar time frame of period 1 had only 6,627 permitted hunters (Table 2). In contrast the combined periods 3 and 4 in 2007 has 6,924 permits but in 2008 the similar time frame of period 2 had 8,464 permitted hunters. We suspect that this reflects some confusion over the change in the time periods rather than a preference for the later hunting period.

About half of the Horicon zone hunters are spending the majority of the time hunting on private land (Table 16). The Horicon Intensive Management Zone (IMZ) was eliminated in 2006.

Many Horicon Zone goose hunters were specifically goose hunters and did not hunt both ducks and geese (Table 6). This characteristic is similar to previous years.

Collins Zone

The Collins Zone is a very small zone surrounding the Collins Wildlife Management Area. The number of applicants for the Collins zone remains very small compared to the statewide number of Canada goose hunters (Table 2). A total of 620 Collins zone permits were issued in 2008. As with the Horicon Zone hunters, these hunters are mostly returning to this zone from previous years (86.8%, Table 4) and most hunted geese the previous year (84.4%, Table 5). While the number of permits awarded in the Collins zone has shown a decreasing trend over the last 20 years, permit numbers in 2008 went up significantly from the previous year (620 compared to 343 in 2007). The percentage of those actively hunting in 2008 was 55% (Table 2), a decrease from 75% in 2007, but total number of active hunters increased. Hunters continued the pattern of previous years of preferring time period 2. In 2008, the number of Collins hunters that hunted ducks the previous year was 49.5% which was similar to prior years.

Permit Issuance

Collins Zone

2008 =	620
2007 =	343
2006 =	357
2005 =	455
2004 =	457
2003 =	494
2002 =	475
2001 =	615
2000 =	583
1999 =	662
1998 =	699
1997 =	845
1996 =	839
1995 =	950
1994 =	887
1993 =	724
1992 =	781
1991 =	969
1990 =	1,197
1989 =	1,303
1988 =	975

Regular Season Harvest

Statewide

The statewide regular season Canada goose harvest in 2008 was 54,150 (Table 8). Production of MVP geese in 2008 was poor, but resident production remained relatively high in 2008. Statewide harvest figures suggest that our season structure continues to effectively manage harvest despite annual changes in production. For the second year of a 5 year stable season trial structure, statewide harvest was down from 60,092 in 2007 and 62,236 in 2006. Harvest may have been impacted by freezing temperatures and early snowfall before the season closed although harvest late in the season is normally low.

When combining the harvest from all zones by county the top 10 harvest counties in 2008 were:

Top 10 counties - Statewide harvest for 2008 (all zones-Reg. season)

County	Rank	Estimated Kill	% of Statewide Total
Dodge	1	7,864	14.5%
Fond Du Lac	2	3,411	6.3%
Brown	3	2,835	5.2%
Manitowoc	4	2,277	4.2%
Dane	5	1,928	3.6%
Outagamie	6	1,840	3.4%
Waukesha	7	1,813	3.3%
Washington	8	1,606	3.0%
Racine	9	1,492	2.8%
Kewaunee	10	1,483	2.7%

This county level distribution illustrates continued concentration of geese and goose harvest in those areas associated with the Horicon (Dodge, Fond du Lac, Washington) and Collins (Manitowoc) zones. These counties all have high MVP harvest. The four counties with the highest harvest have remained unchanged for several years. The rest of the top 10 harvest counties have all been in the top 10 in recent years.

Exterior

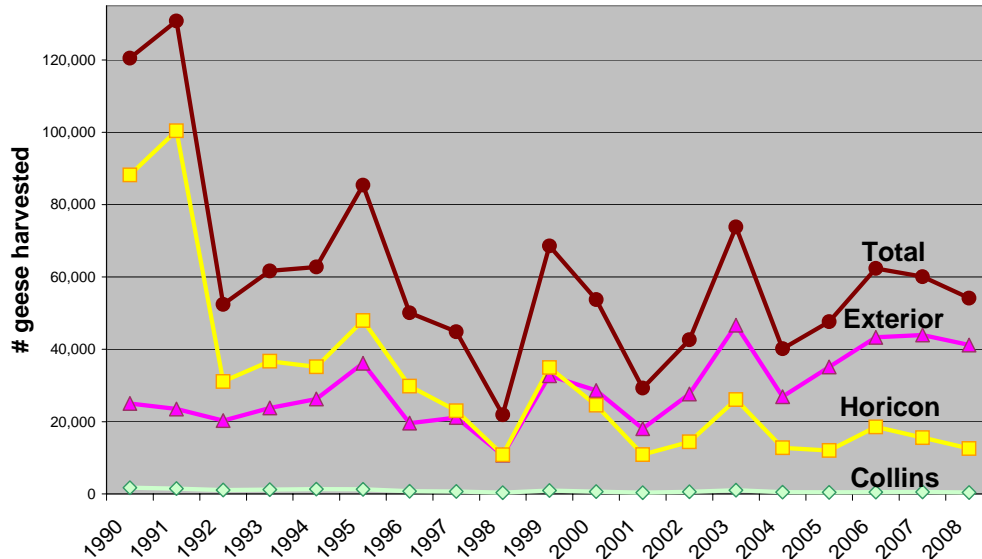
The Exterior zone represents all areas of the state open to goose hunting outside of the Horicon and Collins zones. In response to requests for a later Canada goose hunting season in the Exterior Zone by some hunters and to test whether higher harvest may result from a Saturday versus week day opening day, the Exterior Zone was opened on Saturday September 20 rather than the earliest possible opening date of September 16 in 2008. The estimated opening day harvest on September 20 was 2,398 which was much higher than previous opening days for this season, however, the opening day for the Exterior Zone in 2005 (502), 2006 (735) and 2007 (959) were all weekend days as well. As a result it does not appear that this increased harvest was simply the result of the opening day being scheduled on a weekend. Two other possibilities could be that the 4 day no hunting period between the Early September and Exterior Zone hunting seasons made the geese more susceptible to harvest on opening day or because the later date allowed more northern migrants to arrive in Wisconsin which increased harvest.

While the opening day harvest was higher, the overall harvest in 2008 was lower than 2006 or 2007. By this regulation change, we shifted 4 days of Canada goose hunting from September to December. The harvest of Canada geese in December has been much lower than in the early portion of the season. For example, in 2007, the first 4 days of weekday hunting in September resulted in a harvest of 1832 geese while in 2008 the last 4 days of the season only 121 geese were harvested. It is clear that the increase in harvest from a Saturday opening day in September does not compensate for the loss of harvest opportunity by placing Canada goose hunting days in December rather than September.

The total Exterior zone harvest was 41,215 in 2008, which was 76% of the statewide harvest (Table 8). This proportion of the statewide total was similar to recent years (73% in 2007, 69% in 2006). The actual harvest was the 4th highest since the season began in 1990. The list of the top 10 harvest counties was similar to recent years, as all counties have been in the top 10 for harvest in recent years. This group of counties represents a southeast/south-central portion of the state excluding those areas in the Horicon and Collins management zones. These counties also overlap with several of the counties that have the highest human populations, which suggests that we are successful in taking advantage of some of the harvest potential in areas where high goose numbers have greater potential to create nuisance problems.

Note: This figure is based on state estimates.

Canada Goose Harvest in All Regular Season Zones, 1990-2008



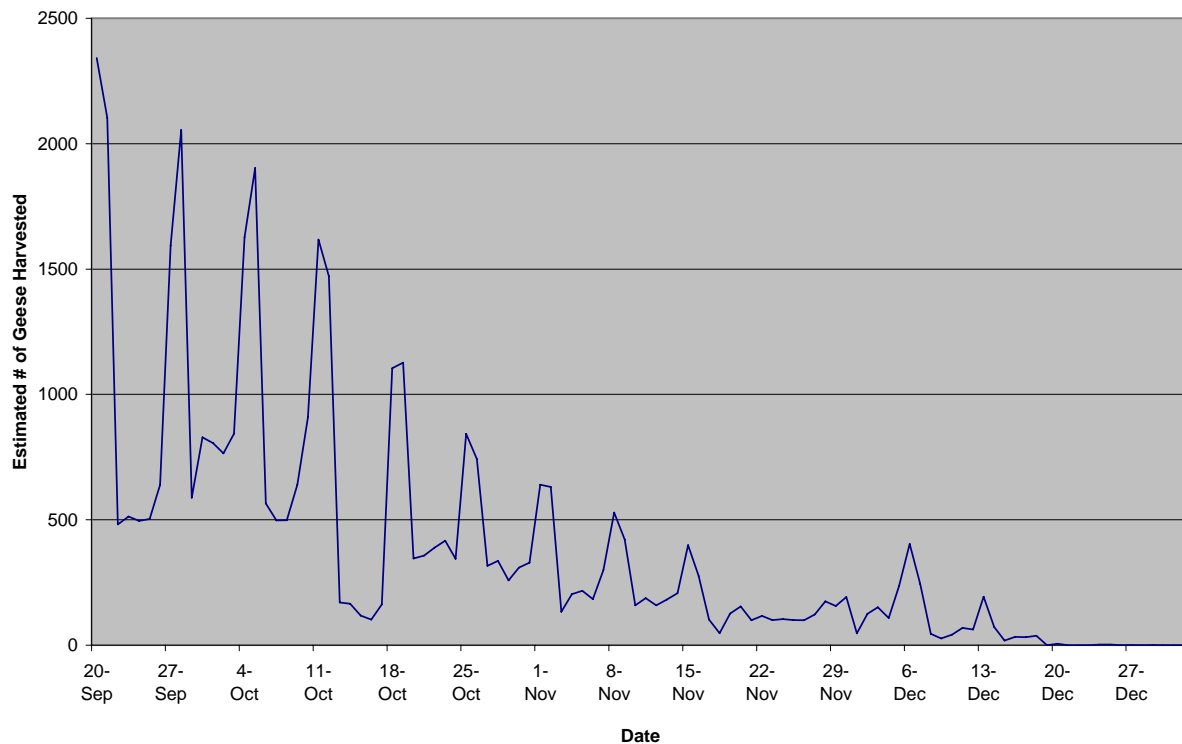
Top 10 counties - Exterior harvest - 2008

County	Rank	Estimated Kill	% of Exterior Total
Brown	1	2,835	6.9%
Dane	2	1,928	4.7%
Manitowoc	3	1,885	4.6%
Outagamie	4	1,840	4.5%
Waukesha	5	1,813	4.4%
Racine	6	1,492	3.6%
Kewaunee	7	1,483	3.6%
Sheboygan	8	1,377	3.3%
Walworth	9	1,371	3.3%
Kenosha	10	1,367	3.3%

Harvest of Canada geese continues to be highest on weekends and most of the Exterior zone harvest occurs in late September and October (Table 11). While the Exterior Zone season did not begin until September 20, there were a total of 54 Canada geese reported harvested during the 4 days of closed hunting between the Early September and Exterior Zone seasons. It is likely that these reports were a result of late early season reports or user error with the harvest reporting system, however, they are reported for data summary purposes. Daily and weekly harvest levels drop off considerably during November and December. In 2008, ice began to form over marshes in the north by the middle of November and much of the state was frozen over by early

December. December snowfall hit record levels in southern parts of the state. As a result, most Canada goose hunting was over before the season ended. Canada goose harvest is particularly low during the regular deer gun hunting season at the end of November and increases slightly followed that period. In 2008, 10,008 (12.8%) hunters harvested at least one goose out of 78,152 Exterior zone permit holders (Table 15). This proportion has remained relatively unchanged for several years. While these figures may seem low we have no measure of how many of these permit holders actively hunted geese because Conservation Permit holders can automatically obtain this permit. Fifty-two percent of the successful hunters harvested only 1 goose and 21% harvested 2 geese. These percentages are very similar to 2004 and 2005, but reflect a change from 2006 and 2007 when about 30% of hunters harvested just 1 goose, and another 30% harvested 2 geese.

2008 Exterior Zone Estimated Canada Goose Harvest By Day



Horicon Zone

The total harvest for the Horicon Zone was 12,543 in 2008, which was 23% of the statewide regular season harvest (Table 8). This total was lower than 2007 (15,585) or 2006 (18,549) and also a lower proportion of the statewide harvest when compared to 2007 (26%). The overall number of Horicon zone permit holders was up slightly in 2008 but participation and success rates decreased (Tables 2, 13 and 14). The areas directly adjacent to the Horicon National Wildlife Refuge and Wildlife Management Areas (portions of Dodge and Fond du Lac Counties) continue to represent a high percentage of the Horicon Zone harvest (83% in 2008). Only about

one quarter of the Horicon zone hunters harvested more than 2 geese and less than one-tenth filled all 6 of their harvest tags (Table 13).

Collins zone

The Collins zone is a relatively small harvest management zone that represents an area with high harvest potential (Tables 13 and 14). Manitowoc County is the 4th highest in Canada goose harvest when combining the harvest from all zones, and Collins is a key goose concentration area in that county. The total harvest for the Collins zone was 392 in 2008 (Table 8).

MANAGEMENT IMPLICATIONS

In the past, Wisconsin was largely dependent upon the MVP population for goose harvest opportunities. This has continued to change as the giant Canada goose population in Wisconsin and the region has grown. The Wisconsin harvest derivation published in 2008 showed that the harvest (3 year average 2004-2006) contained 56% MVP and 41% giant Canada geese. With approximately half of the Canada goose harvest from MVP geese, that population is very important to Wisconsin. This proportion of harvest makes Wisconsin unique among states in the Mississippi Flyway where the resident giant Canada goose harvest makes up much more of the annual harvest than most other states. In order to properly manage the MVP and meet USFWS requirements, Wisconsin has (until 2007) adjusted its annual Canada goose harvest in relation to the annual changes in MVP production. In the past this system effectively managed our harvest on MVP geese but may have resulted in an under harvest of giant Canada geese. In 2007, the 5 year stable season trial began, and the quota system was eliminated. Our harvest monitoring will be used as part of our continued evaluation of this new harvest management system. Wisconsin's total 2008 Canada goose harvest was 10% below 2007, and the 2008 Exterior zone harvest was also below recent years (41,215 – 2008 vs. 43,958 – 2007, 43,304 - 2006). The season length and early winter weather were similar in 2007 and 2008, though the opening day was different (September 16 in 2007 and September 20 in 2008). In addition, the MVP production was poor in 2008 so relatively few young MVP Canada geese were in the fall flight. Some combination of these factors may have contributed to the decreased harvest in 2008. Additional years of data with the current season structure will be needed to fully evaluate the new strategy and resulting harvest. With 21% of the statewide regular season Canada goose harvest coming from just the 2 counties containing the Horicon Marsh (Dodge and Fond du Lac) the potential for a large Canada goose harvest continues to exist in this area indicating a continued need for special harvest management in this zone.

The annual changes in Canada goose breeding populations of MVP and Wisconsin giants illustrate the need for continued breeding surveys, banding, and harvest monitoring in order to effectively manage Canada geese in Wisconsin. Breeding, fall distribution, and harvest of Canada geese in Wisconsin is a constantly changing picture. Each year the information collected on Canada geese in Wisconsin has been used to evaluate and adjust our harvest quotas, season structure, and banding efforts. Based on these data, we made significant changes in our banding distribution and effort in 2004 in order to better sample the harvested population of geese in Wisconsin. We continue to refine our banding plan annually. These data provide us the necessary information to document the changes in harvest distribution and population of our

resident giant breeders in relation to the MVP, allowing us to make the necessary adjustments to management and harvest of Canada geese in Wisconsin.

Agricultural crop damage from Canada geese during fall and now spring continues to be a concern for farmers in Wisconsin in the Horicon area and other locations where Canada geese concentrate. Consideration of agricultural damage issues remains important in our overall approach to managing Wisconsin's Canada goose populations.

Similarly, consideration of Canada goose problems in urban areas is part of the overall management of Canada geese in Wisconsin. Our resident breeders have shown a generally increasing population trend since we began monitoring this population in 1986, although in recent years it appears to have stabilized. Much of this increase has been in more suburban and urban counties, however, resident breeders continue to increase in distribution across the state. As we monitor breeding populations and harvest we can evaluate our effectiveness at using recreational harvest to assist in managing these more urban problems from concentrations of Canada geese. It should be highlighted that in the fall of 2006 the USFWS made rule changes for the management of resident giant Canada geese. These changes are primarily procedural with regard to depredation permits. There will not be any immediate impacts on WI goose hunting seasons but the contribution of hunting to control resident Canada goose populations will continue to be monitored. The early September harvest has steadily increased in recent years and is an important part of our management strategy. In addition, site specific Canada goose control measures will continue to be implemented in urban and agricultural areas to mitigate nuisance goose problems.

CITATIONS

Brook, R. and J. Hughes July 2008. Preliminary Spring Survey Results for MVP Canada geese 2008. Ontario Ministry of Natural Resources.

Leafloor, J.O., K. F. Abraham, F. D. Caswell, K. E. Gamble, R. N. Helm, D. D. Humburg, J. S. Lawrence, D. R. Luukkonen, R. D. Pritchert, E. L. Warr, G. G. Zenner. 2003. Canada goose management in the Mississippi Flyway. Pages 22-36 in T. J. Moser, R. D. Lien, K. C. VerCauteren, K. F. Abraham, D. E. Andersen, J. G. Bruggink, J. M. Coluccy, D. A. Graber, J. O. Leafloor, D. R. Luukkonen, R. E. Trost, editors. Proceedings of the 2003 International Canada Goose Symposium, Madison, WI. USA.

Miller, S.W. 1998. The biopolitics of Mississippi Valley Population Canada geese management: the Wisconsin perspective. Pages 467-474 in D.H. Rusch, M. D. Samuel, D. D. Humburg, and B. D. Sullivan, editors. Biology and management of Canada geese. Proceedings of the international Canada Goose Symposium, Milwaukee, Wisconsin, USA.

Wisconsin Department of Natural Resources. 1980. Canada Goose Management Plan for East Central Wisconsin 1980-1990.



HARVEST AND PARTICIPATION DATA

Table 1. *Number of surveys mailed, returned, and response rate for the 2008 Canada goose season.*

Zone and Period	# Mailed	# Returned	Percent Response
Horicon 1	4,400	2,178	49.5%
Horicon 2	5,600	2,953	52.7%
Collins 1	178	66	37.1%
Collins 2	340	162	47.6%
Collins 3	103	64	62.1%
Total	10,621	5,423	51.1%

Table 2. *Permits issued, active hunters, percent active, and number of successful hunters by zone and time period. Active and successful hunters derived from questionnaire data. Percent successful applies to active permit holders, except for Exterior Zone where it applies to all permit holders.*

Zone and Period	Permits Issued (hunters)	Active Hunters	% Active	# Successful	% Successful
Horicon 1	6,627	4,549	68.6%	2,796	61.5%
Horicon 2	8,464	4,534	53.6%	1,507	33.2%
Collins 1	177	80	45.5%	53	65.5%
Collins 2	340	216	63.6%	99	45.6%
Collins 3	103	43	42.2%	14	33.3%
Exterior	78,152			10,009	12.8%
Total	93,863			14,478	15.4%

Table 3. Number of goose permit applicants by zone and county of residence. (Continued on next page).

County	Horicon		Collins		Exterior	
	Frequency	Percent	Frequency	Percent	Frequency	Percent
Adams	14	0.09			206	0.26
Ashland	3	0.02			306	0.39
Barron	17	0.11	4	0.66	1,121	1.43
Bayfield	3	0.02			264	0.34
Brown	96	0.63	26	4.3	2,702	3.46
Buffalo	24	0.16	2	0.33	412	0.53
Burnett	6	0.04	1	0.17	490	0.63
Calumet	11	0.07	49	8.1	651	0.83
Chippewa	24	0.16	1	0.17	881	1.13
Clark	20	0.13	1	0.17	373	0.48
Columbia	686	4.53	10	1.65	1,271	1.63
Crawford	46	0.3	1	0.17	350	0.45
Dane	785	5.18	10	1.65	4,529	5.8
Dodge	1,543	10.19	4	0.66	447	0.57
Door	5	0.03			693	0.89
Douglas	5	0.03	2	0.33	540	0.69
Dunn	28	0.18	6	0.99	601	0.77
Eau Claire	71	0.47	2	0.33	1,065	1.36
Florence	2	0.01			54	0.07
Fond Du Lac	1,566	10.34	7	1.16	870	1.11
Forest	6	0.04			195	0.25
Grant	195	1.29	2	0.33	492	0.63
Green	69	0.46			583	0.75
Green Lake	607	4.01	4	0.66	219	0.28
Iowa	45	0.3	2	0.33	318	0.41
Iron	5	0.03	2	0.33	122	0.16
Jackson	15	0.1	2	0.33	249	0.32
Jefferson	199	1.31	5	0.83	2,007	2.57
Juneau	42	0.28	1	0.17	637	0.82
Kenosha	101	0.67	4	0.66	1,187	1.52
Kewaunee	5	0.03	7	1.16	646	0.83
La Crosse	266	1.76	2	0.33	1,847	2.36
Lafayette	37	0.24	4	0.66	193	0.25
Langlade	17	0.11	2	0.33	343	0.44
Lincoln	81	0.53	5	0.83	654	0.84
Manitowoc	29	0.19	80	13.22	1,819	2.33
Marathon	164	1.08	9	1.49	1,621	2.07
Marinette	21	0.14	5	0.83	892	1.14
Marquette	123	0.81	2	0.33	531	0.68
Menominee					11	0.01

County	Horicon		Collins		Exterior	
	Frequency	Percent	Frequency	Percent	Frequency	Percent
Milwaukee	1,216	8.03	14	2.31	2,560	3.28
Monroe	31	0.2	2	0.33	573	0.73
Oconto	19	0.13	2	0.33	800	1.02
Oneida	83	0.55	3	0.5	988	1.26
Outagamie	242	1.6	93	15.37	3,359	4.3
Ozaukee	193	1.27	8	1.32	1,273	1.63
Pepin	3	0.02			179	0.23
Pierce	17	0.11			701	0.9
Polk	8	0.05	1	0.17	1,246	1.59
Portage	132	0.87	8	1.32	1,261	1.61
Price	16	0.11	1	0.17	347	0.44
Racine	143	0.94	11	1.82	2,418	3.09
Richland	36	0.24			140	0.18
Rock	248	1.64	2	0.33	2,088	2.67
Rusk	3	0.02	2	0.33	263	0.34
St. Croix	17	0.11	5	0.83	1,553	1.99
Sauk	168	1.11	3	0.5	990	1.27
Sawyer	10	0.07	1	0.17	420	0.54
Shawano	42	0.28	4	0.66	711	0.91
Sheboygan	148	0.98	54	8.93	2,142	2.74
Taylor	8	0.05	1	0.17	351	0.45
Trempealeau	43	0.28	5	0.83	585	0.75
Vernon	98	0.65	7	1.16	413	0.53
Vilas	49	0.32	1	0.17	497	0.64
Walworth	74	0.49	4	0.66	1,453	1.86
Washburn	5	0.03	2	0.33	576	0.74
Washington	830	5.48	6	0.99	1,828	2.34
Waukesha	1,327	8.76	17	2.81	4,662	5.97
Waupaca	87	0.57	6	0.99	1,175	1.5
Waushara	56	0.37	2	0.33	529	0.68
Winnebago	681	4.5	51	8.43	2,740	3.51
Wood	165	1.09			1,719	2.2
Unknown	714	4.72	11	1.82	2,369	3.03
Non. Resident	1,247	8.24	14	2.31	2,851	3.65

Table 4. *Goose hunting in past zones.*

Current Zone	Past Collins	Past Horicon	Past Exterior
Collins	86.8%	4.0%	9.2%
Horicon	1.4%	93.2%	5.4%

Table 5. *Percent hunting geese in 2008 that also hunted in 2007.*

Zone	% That Hunted in 2007
Collins	84.4%
Horicon	86.1%

Table 6. *Past and present duck hunting by goose permit.*

Zone	Duck Hunted in 2007	Duck Hunted in 2008
Collins	49.5%	62.6%
Horicon	58.4%	66.8%

Table 7. *Mean number of hunting trips by zone and time period. Applies to active permit holders only.*

Zone/Period	Mean # of Trips	Maximum # of Trips
Collins 1	7.3	20
Collins 2	5.1	17
Collins 3	7.0	26
Horicon 1	4.5	32
Horicon 2	3.6	34

Table 8. *Harvest by zone and time period. The estimated harvest was derived from questionnaire data in the Collins and Horicon zones. Reported harvest in the Exterior Zone is from mandatory reporting. The reported harvest for the Exterior zone was adjusted by an overall compliance rate of 87.3% to obtain the estimated harvest.*

Zone/Period	Estimated Harvest	Reported Harvest
Collins 1	169	
Collins 2	197	
Collins 3	26	
Horicon 1	8,893	
Horicon 2	3,650	
Exterior	41,215	35,996
Total	54,150	

Table 9. *Exterior zone goose harvest by county (continued on next page).*

County	Reported Kill	Expanded Kill	Percent
Adams	303	347	0.8%
Ashland	74	85	0.2%
Barron	650	744	1.8%
Bayfield	109	125	0.3%
Brown	2,476	2,835	6.9%
Buffalo	352	403	1.0%
Burnett	226	259	0.6%
Calumet	702	804	2.0%
Chippewa	634	726	1.8%
Clark	366	419	1.0%
Columbia	473	542	1.3%
Crawford	151	173	0.4%
Dane	1,684	1,928	4.7%
Dodge	208	238	0.6%
Door	1,070	1,225	3.0%
Douglas	133	152	0.4%
Dunn	111	127	0.3%
Eau Claire	100	115	0.3%
Florence	19	22	0.1%
Fond Du Lac	514	589	1.4%
Forest	45	52	0.1%
Grant	65	74	0.2%
Green	99	113	0.3%
Green Lake	3	3	0.0%
Iowa	70	80	0.2%
Iron	51	58	0.1%
Jackson	92	105	0.3%
Jefferson	699	800	1.9%
Juneau	237	271	0.7%
Kenosha	1,194	1,367	3.3%
Kewaunee	1,295	1,483	3.6%
La Crosse	305	349	0.8%
Lafayette	29	33	0.1%
Langlade	136	156	0.4%
Lincoln	308	353	0.9%
Manitowoc	1,646	1,885	4.6%
Marathon	783	897	2.2%
Marinette	431	493	1.2%
Marquette	563	645	1.6%
Menominee	2	2	0.0%
Milwaukee	1	1	0.0%
Monroe	299	342	0.8%
Oconto	619	709	1.7%
Oneida	128	147	0.4%
Outagamie	1,607	1,840	4.5%
Ozaukee	812	930	2.3%

County	Reported Kill	Expanded Kill	Percent
Pepin	13	15	0.0%
Pierce	154	176	0.4%
Polk	726	831	2.0%
Portage	503	576	1.4%
Price	84	96	0.2%
Racine	1,303	1,492	3.6%
Richland	30	34	0.1%
Rock	740	847	2.1%
Rusk	299	342	0.8%
Sauk	281	322	0.8%
Sawyer	158	181	0.4%
Shawano	444	508	1.2%
Sheboygan	1,203	1,377	3.3%
St. Croix	552	632	1.5%
Taylor	484	554	1.3%
Trempealeau	161	184	0.4%
Vernon	151	173	0.4%
Vilas	74	85	0.2%
Walworth	1,197	1,371	3.3%
Washburn	300	344	0.8%
Washington	887	1,016	2.5%
Waukesha	1,583	1,813	4.4%
Waupaca	723	828	2.0%
Waushara	370	424	1.0%
Winnebago	950	1,088	2.6%
Wood	752	861	2.1%
Total	35,996	41,215	

Table 10. *Horicon Zone goose harvest by county. The estimated harvest was derived from questionnaire data.*

County	Total Estimated Harvest	% of Harvest
Columbia	213	1.7%
Dodge	7,626	60.8%
Fond du lac	2,822	22.5%
Green Lake	690	5.5%
Marquette	401	3.2%
Washington	590	4.7%
Winnebago	201	1.6%
Total	12,543	

Table 11. Exterior zone goose harvest by date. *Bold numbers indicate weekends (continued on the next page).*

DOK	Reported Kill	Expanded Kill	Cumulative Total	Percent	Cumulative Percent
16-Sep-08	15	17	17	0.0%	0.0%
17-Sep-08	15	17	34	0.0%	0.1%
18-Sep-08	4	5	39	0.0%	0.1%
19-Sep-08	20	23	62	0.1%	0.2%
20-Sep-08	2,040	2,336	2,398	5.7%	5.8%
21-Sep-08	1,841	2,108	4,506	5.1%	10.9%
22-Sep-08	417	477	4,983	1.2%	12.1%
23-Sep-08	448	513	5,496	1.2%	13.3%
24-Sep-08	437	500	5,996	1.2%	14.5%
25-Sep-08	440	504	6,500	1.2%	15.8%
26-Sep-08	560	641	7,141	1.6%	17.3%
27-Sep-08	1,387	1,588	8,729	3.9%	21.2%
28-Sep-08	1,802	2,063	10,793	5.0%	26.2%
29-Sep-08	511	585	11,378	1.4%	27.6%
30-Sep-08	713	816	12,194	2.0%	29.6%
01-Oct-08	717	821	13,015	2.0%	31.6%
02-Oct-08	679	777	13,793	1.9%	33.5%
03-Oct-08	740	847	14,640	2.1%	35.5%
04-Oct-08	1,425	1,632	16,272	4.0%	39.5%
05-Oct-08	1,665	1,906	18,178	4.6%	44.1%
06-Oct-08	491	562	18,740	1.4%	45.5%
07-Oct-08	433	496	19,236	1.2%	46.7%
08-Oct-08	432	495	19,731	1.2%	47.9%
09-Oct-08	552	632	20,363	1.5%	49.4%
10-Oct-08	787	901	21,264	2.2%	51.6%
11-Oct-08	1,417	1,622	22,886	3.9%	55.5%
12-Oct-08	1,288	1,475	24,361	3.6%	59.1%
13-Oct-08	144	165	24,526	0.4%	59.5%
14-Oct-08	143	164	24,690	0.4%	59.9%
15-Oct-08	105	120	24,810	0.3%	60.2%
16-Oct-08	89	102	24,912	0.2%	60.4%
17-Oct-08	142	163	25,074	0.4%	60.8%
18-Oct-08	966	1,106	26,180	2.7%	63.5%
19-Oct-08	986	1,129	27,309	2.7%	66.3%
20-Oct-08	291	333	27,643	0.8%	67.1%
21-Oct-08	313	358	28,001	0.9%	67.9%
22-Oct-08	340	389	28,390	0.9%	68.9%
23-Oct-08	363	416	28,806	1.0%	69.9%
24-Oct-08	301	345	29,151	0.8%	70.7%
25-Oct-08	742	850	30,000	2.1%	72.8%
26-Oct-08	648	742	30,742	1.8%	74.6%
27-Oct-08	282	323	31,065	0.8%	75.4%
28-Oct-08	292	334	31,399	0.8%	76.2%
29-Oct-08	226	259	31,658	0.6%	76.8%
30-Oct-08	274	314	31,972	0.8%	77.6%
31-Oct-08	288	330	32,302	0.8%	78.4%

DOK	Reported Kill	Expanded Kill	Cumulative Total	Percent	Cumulative Percent
01-Nov-08	563	645	32,946	1.6%	79.9%
02-Nov-08	559	640	33,586	1.6%	81.5%
03-Nov-08	118	135	33,721	0.3%	81.8%
04-Nov-08	181	207	33,929	0.5%	82.3%
05-Nov-08	194	222	34,151	0.5%	82.9%
06-Nov-08	160	183	34,334	0.4%	83.3%
07-Nov-08	268	307	34,641	0.7%	84.0%
08-Nov-08	469	537	35,178	1.3%	85.4%
09-Nov-08	372	426	35,604	1.0%	86.4%
10-Nov-08	139	159	35,763	0.4%	86.8%
11-Nov-08	167	191	35,954	0.5%	87.2%
12-Nov-08	139	159	36,113	0.4%	87.6%
13-Nov-08	164	188	36,301	0.5%	88.1%
14-Nov-08	185	212	36,513	0.5%	88.6%
15-Nov-08	367	420	36,933	1.0%	89.6%
16-Nov-08	263	301	37,234	0.7%	90.3%
17-Nov-08	108	124	37,358	0.3%	90.6%
18-Nov-08	90	103	37,461	0.3%	90.9%
19-Nov-08	113	129	37,590	0.3%	91.2%
20-Nov-08	137	157	37,747	0.4%	91.6%
21-Nov-08	87	100	37,847	0.2%	91.8%
22-Nov-08	102	117	37,964	0.3%	92.1%
23-Nov-08	90	103	38,067	0.3%	92.4%
24-Nov-08	91	104	38,171	0.3%	92.6%
25-Nov-08	88	101	38,272	0.2%	92.9%
26-Nov-08	90	103	38,375	0.3%	93.1%
27-Nov-08	107	123	38,497	0.3%	93.4%
28-Nov-08	158	181	38,678	0.4%	93.8%
29-Nov-08	158	181	38,859	0.4%	94.3%
30-Nov-08	213	244	39,103	0.6%	94.9%
01-Dec-08	90	103	39,206	0.3%	95.1%
02-Dec-08	111	127	39,333	0.3%	95.4%
03-Dec-08	132	151	39,484	0.4%	95.8%
04-Dec-08	98	112	39,596	0.3%	96.1%
05-Dec-08	210	240	39,837	0.6%	96.7%
06-Dec-08	367	420	40,257	1.0%	97.7%
07-Dec-08	235	269	40,526	0.7%	98.3%
08-Dec-08	51	58	40,585	0.1%	98.5%
09-Dec-08	50	57	40,642	0.1%	98.6%
10-Dec-08	37	42	40,684	0.1%	98.7%
11-Dec-08	60	69	40,753	0.2%	98.9%
12-Dec-08	55	63	40,816	0.2%	99.0%
13-Dec-08	169	194	41,009	0.5%	99.5%
14-Dec-08	63	72	41,081	0.2%	99.7%
15-Dec-08	16	18	41,100	0.0%	99.7%
16-Dec-08	29	33	41,133	0.1%	99.8%
17-Dec-08	28	32	41,165	0.1%	99.9%
18-Dec-08	33	38	41,203	0.1%	100.0%

DOK	Reported Kill	Expanded Kill	Cumulative Total	Percent	Cumulative Percent
20-Dec-08	5	6	41,209	0.0%	100.0%
24-Dec-08	2	2	41,211	0.0%	100.0%
25-Dec-08	3	3	41,214	0.0%	100.0%
29-Dec-08	1	1	41,215	0.0%	100.0%
Total	35,996	41,215			

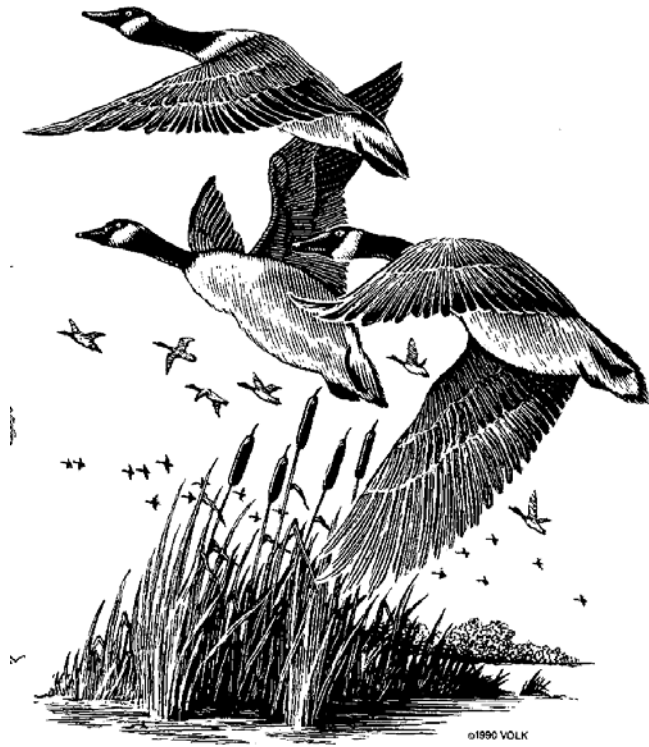


Table 12. *Weekday of reported kill in percent. Data from mandatory reporting in the Exterior zone and questionnaires in the other zones.*

Zone/ Period	Sunday	Monday	Tuesday	Wednesday	Thursday	Friday	Saturday
Collins 1	30.4%	11.6%	8.7%	7.3%	10.1%	5.8%	26.1%
Collins 2	16.4%	13.6%	16.4%	10.0%	16.4%	11.8%	15.5%
Collins 3	12.5%	6.3%	6.3%	6.3%	12.5%	0.0%	56.3%
Collins Total	21.0%	12.3%	12.8%	8.7%	13.9%	8.7%	22.6%
Horicon 1	22.1%	10.8%	7.3%	10.8%	8.2%	12.8%	28.1%
Horicon 2	17.0%	10.1%	10.0%	10.8%	9.7%	12.5%	29.9%
Horicon Total	20.7%	10.6%	8.1%	10.8%	8.6%	12.7%	28.6%
Exterior	27.9%	7.6%	8.5%	8.4%	8.8%	10.6%	28.3%
All Zones	27.1%	8.0%	8.5%	8.6%	8.8%	10.8%	28.3%

Table 13. *Percent success by active permit for the Horicon and Collins zone. Harvest figures were derived from questionnaire data.*

Zone/Period	1 st Permit	2 nd Permit	3 rd Permit	4 th Permit	5 th Permit	6 th Permit
Collins 1	57.6%	42.4%	30.3%	24.2%	18.2%	12.1%
Collins 2	46.4%	27.3%	12.7%	6.4%	1.8%	0.0%
Collins 3	30.0%	20.0%	3.3%	0.0%	0.0%	0.0%
Horicon 1	60.6%	47.0%	34.4%	25.6%	16.5%	11.6%
Horicon 2	33.4%	21.3%	11.0%	7.9%	4.3%	3.1%

Table 14. *Number of birds harvested per permit holder and active permit holder by zone. Hunter numbers derived from applications, questionnaires and 1-800 registration.*

Zone	Birds/Permit Holder	Birds/Active Permit Holder
Collins	0.63	1.15
Horicon	0.83	1.39
Exterior	0.53	N/A

Table 15. *Exterior Zone season bag derived from mandatory reporting data.*

Bag	Number of Hunters	Percent
0	68,143	87.19%
1	2,904	3.72%
2	3,024	3.87%
3	964	1.23%
4	1,005	1.29%
5	444	0.57%
6	448	0.57%
7	214	0.27%
8	214	0.27%
9	126	0.16%
10	136	0.17%
11	65	0.08%
12	78	0.10%
13	56	0.07%
14	53	0.07%
15	47	0.06%
16	26	0.03%
17	18	0.02%
18	19	0.02%
19	19	0.02%
20	20	0.03%
21	11	0.01%
22	12	0.02%
23	12	0.02%
24	10	0.01%
25	12	0.02%
26	12	0.02%
27	6	0.01%
28	8	0.01%
29	4	0.01%
30	3	0.00%
31	9	0.01%
32	4	0.01%
33	2	0.00%
34	2	0.00%
35	5	0.01%
36	1	0.00%
39	1	0.00%
42	2	0.00%
43	1	0.00%
44	1	0.00%
47	1	0.00%
50	1	0.00%
51	1	0.00%
52	1	0.00%
54	1	0.00%
55	1	0.00%
56	1	0.00%
76	1	0.00%
79	1	0.00%
84	1	0.00%
88	1	0.00%

Table 16. *Percent of time spent hunting private land by zone.*

Zone	No Answer	< 25%	25-49%	50-75%	> 75%
Collins	49.8%	37.8%	0.3%	1.3%	10.8%
Horicon	41.4%	10.0%	0.9%	2.1%	45.6%

Table 18. *With the elimination of the Horicon Intensive Management Subzone, my hunting experience was:*

	Frequency	Percent
Much Improved	168	5.7%
Improved	284	9.7%
Same	1,936	65.9%
Worse	345	11.7%
Much Worse	202	6.9%

Table 19. *If you hunted in Fond du Lac, Green Lake, or Marquette County, did you hunt north or south of highway 23?*

	Frequency	Percent
North	266	18.7%
South	1,153	81.1%

Table 20. *Number of active hunters, percent paying blind access fee, mean days hunted, mean payment per trip, and total access fees paid by zone.*

Zone	Active Hunters	Percent Paying	Mean Days	Mean Payment	Total Paid
Collins	340	15.6%	5.9	\$28.18	\$8,818.54
Horicon	9,083	30.6%	4.1	\$13.65	\$155,549.01

Table 21. Number applicants, active hunters, and birds harvested during the September early Canada goose season.

Year	# of Applicants	# of Active Hunters	Harvest
1990	19,561	6,408	842
1991	4,772	1,983	712
1992	5,383	2,024	772
1993	2,982	1,636	679
1994	20,724	7,114	1,668
1995	13,343	7,923	4,928
1996	21,378	8,979	10,506
1997	28,761		7,435
1998	29,580		7,627
1999	73,799		6,032
2000	69,716		11,192
2001	74,268		15,952
2002	75,565		11,687
2003	76,728		8,650
2004	76,294		14,007
2005	74,437		13,410
2006	68,152		20,034
2007	66,207		21,760
2008	63,904		24,276

Table 22. Early September Canada goose harvest by date (bold numbers indicate weekends).

Date of Kill	Reported Kill	Expanded Kill	Percent
01-Sep-08	5,469	6,683	27.5%
02-Sep-08	1,126	1,376	5.7%
03-Sep-08	923	1,128	4.6%
04-Sep-08	488	596	2.5%
05-Sep-08	813	993	4.1%
06-Sep-08	1,673	2,044	8.4%
07-Sep-08	1,504	1,838	7.6%
08-Sep-08	671	820	3.4%
09-Sep-08	998	1,220	5.0%
10-Sep-08	962	1,176	4.8%
11-Sep-08	761	930	3.8%
12-Sep-08	810	990	4.1%
13-Sep-08	1,123	1,372	5.7%
14-Sep-08	1,574	1,923	7.9%
15-Sep-08	971	1,187	4.9%
Total	19,866	24,276	

Table 23. Early September Canada goose harvest by county.

County	Reported Kill	Expanded Kill	Percent
Adams	97	119	0.5%
Ashland	42	51	0.2%
Barron	633	774	3.2%
Bayfield	138	169	0.7%
Brown	1,336	1,633	6.7%
Buffalo	254	310	1.3%
Burnett	181	221	0.9%
Calumet	521	637	2.6%
Chippewa	345	422	1.7%
Clark	123	150	0.6%
Columbia	228	279	1.1%
Crawford	46	56	0.2%
Dane	538	657	2.7%
Dodge	950	1,161	4.8%
Door	753	920	3.8%
Douglas	106	130	0.5%
Dunn	208	254	1.0%
Eau Claire	63	77	0.3%
Florence	22	27	0.1%
Fond du Lac	240	293	1.2%
Forest	21	26	0.1%
Grant	42	51	0.2%
Green	67	82	0.3%
Green Lake	17	21	0.1%
Iowa	28	34	0.1%
Iron	33	40	0.2%
Jackson	37	45	0.2%
Jefferson	531	649	2.7%
Juneau	114	139	0.6%
Kenosha	434	530	2.2%
Kewaunee	587	717	3.0%
La Crosse	186	227	0.9%
Lafayette	40	49	0.2%
Langlade	18	22	0.1%
Lincoln	80	98	0.4%
Manitowoc	1,067	1,304	5.4%
Marathon	546	667	2.7%
Marinette	179	219	0.9%
Marquette	75	92	0.4%
Milwaukee	10	12	0.1%
Monroe	122	149	0.6%
Oconto	396	484	2.0%
Oneida	78	95	0.4%
Outagamie	379	463	1.9%
Ozaukee	229	280	1.2%

County	Reported Kill	Expanded Kill	Percent
Pepin	24	29	0.1%
Pierce	119	145	0.6%
Polk	917	1,121	4.6%
Portage	198	242	1.0%
Price	88	108	0.4%
Racine	465	568	2.3%
Richland	43	53	0.2%
Rock	427	522	2.1%
Rusk	135	165	0.7%
Sauk	104	127	0.5%
Sawyer	116	142	0.6%
Shawano	215	263	1.1%
Sheboygan	587	717	3.0%
St. Croix	439	536	2.2%
Taylor	240	293	1.2%
Trempealeau	371	453	1.9%
Vernon	83	101	0.4%
Vilas	66	81	0.3%
Walworth	509	622	2.6%
Washburn	271	331	1.4%
Washington	453	554	2.3%
Waukesha	671	820	3.4%
Waupaca	213	260	1.1%
Waushara	52	64	0.3%
Winnebago	586	716	2.9%
Wood	333	407	1.7%
Unknown	1	1	0.0%
Total	19,866	24,276	

Table 24. *Early September season bag derived from mandatory reporting data.*

Bag	Number of Hunters	Percent
0	58,902	92.17%
1	1,313	2.05%
2	990	1.55%
3	658	1.03%
4	499	0.78%
5	557	0.87%
6	188	0.29%
7	183	0.29%
8	139	0.22%
9	90	0.14%
10	113	0.18%
11	50	0.08%
12	37	0.06%
13	42	0.07%
14	31	0.05%
15	14	0.02%
16	17	0.03%
17	15	0.02%
18	7	0.01%
19	8	0.01%
20	6	0.01%
21	3	0.00%
22	10	0.02%
23	4	0.01%
24	2	0.00%
25	6	0.01%
26	2	0.00%
28	1	0.00%
29	1	0.00%
30	2	0.00%
32	2	0.00%
33	2	0.00%
34	2	0.00%
35	1	0.00%
36	1	0.00%
38	1	0.00%
39	1	0.00%
42	1	0.00%
43	1	0.00%
46	1	0.00%

Table 25. *Percent of successful bags containing 1 or 2 geese.*

Zone	Period	Percent of 1 Kill Bags	Percent of 2 Kill Bags
Collins	1	69.8%	30.2%
	2	78.0%	22.0%
	3	85.7%	14.3%
	All Periods	76.0%	24.0%
Horicon	1	52.2%	47.8%
	2	55.8%	44.2%
	All Periods	53.3%	46.7%

The Wisconsin Department of Natural Resources provides equal opportunity in its employment, programs, services, and functions under an Affirmative Action Plan. If you have any questions, please write to Equal Opportunity Office, Department of Interior, Washington, D.C. 20240.

This publication can be made available in alternative formats (large print, Braille, audio tape, etc) upon request. Please call (608)266-8204 for more information.

WM-432

